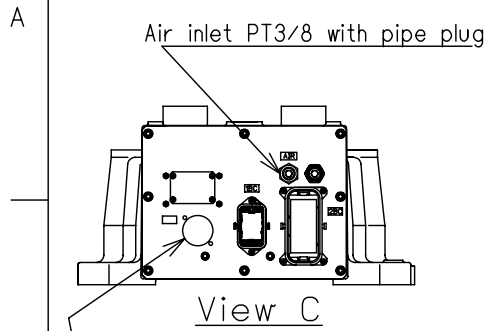
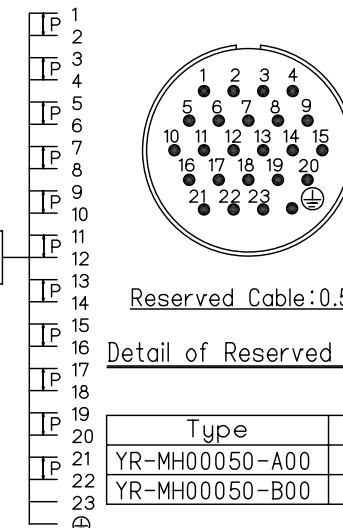
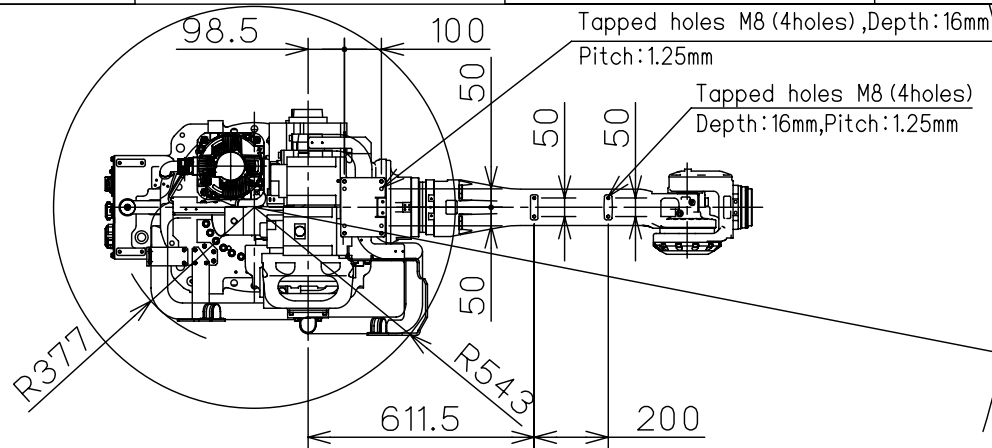


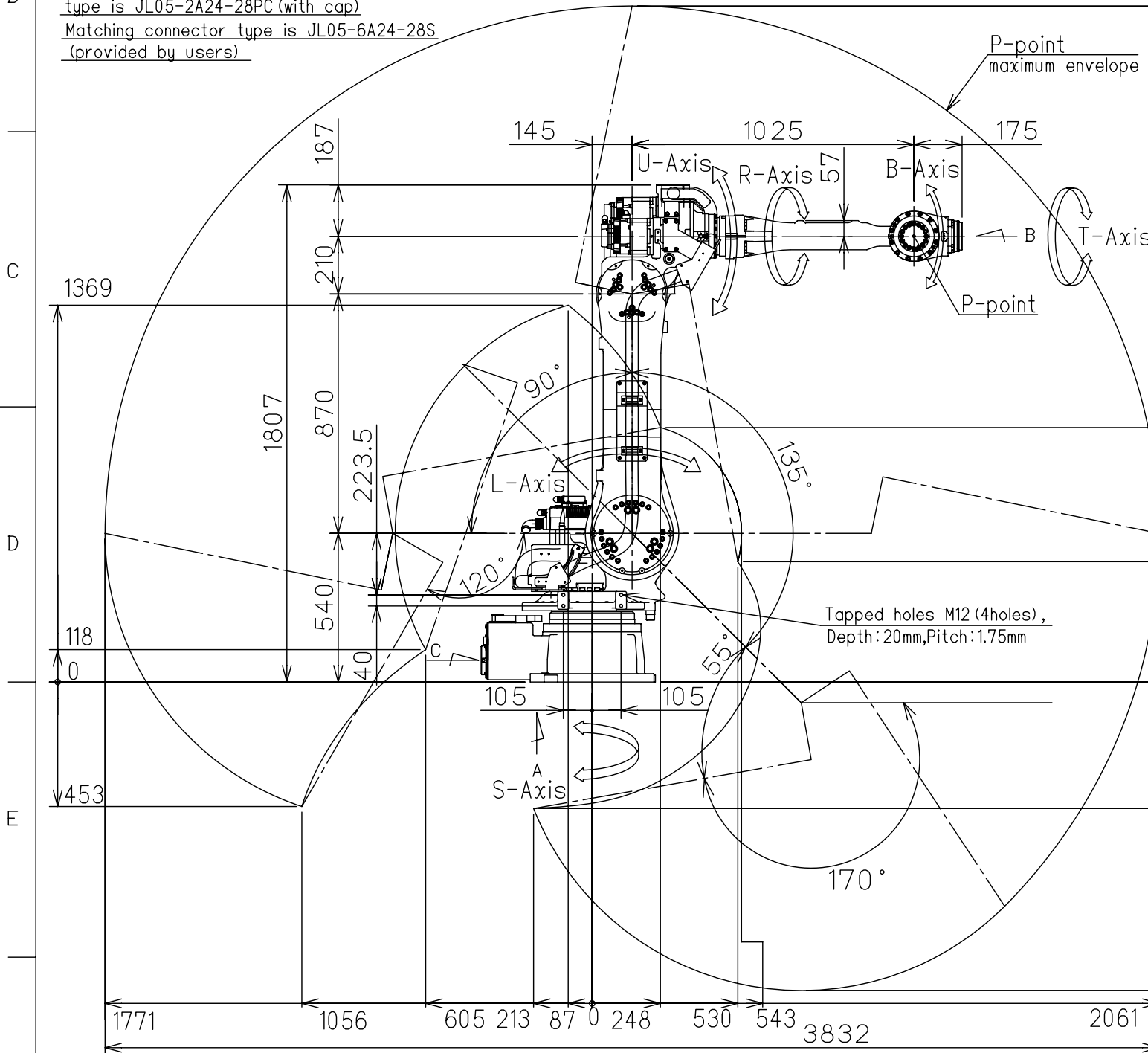
DWG.NO.HW0389238



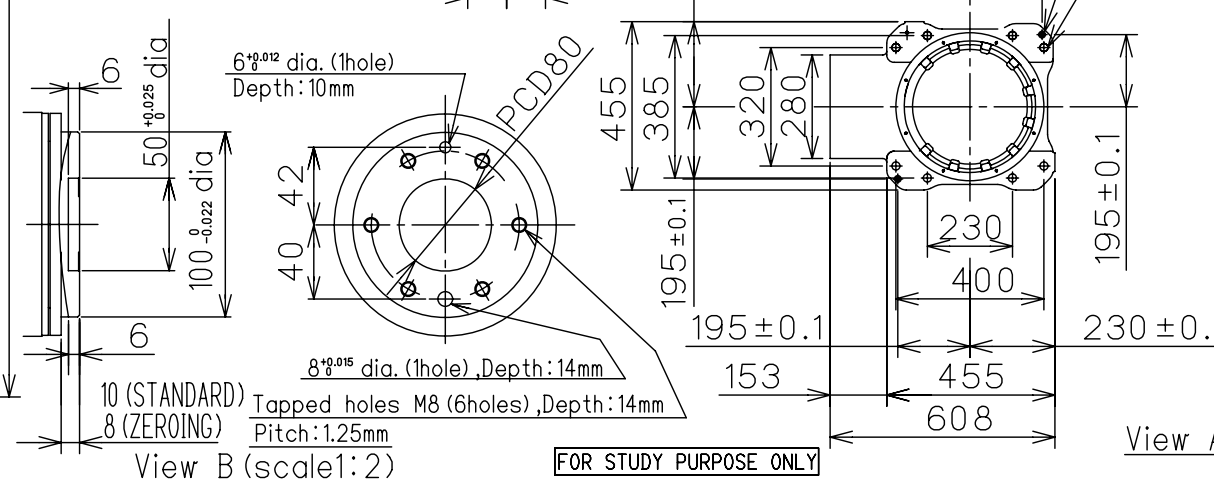
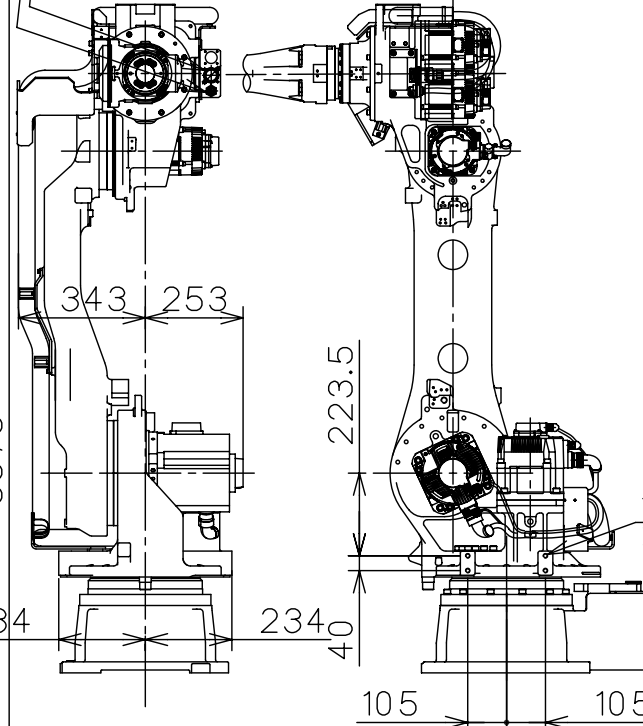
Internal user wiring connector
type is JL05-2A24-28PC (with cap)
Matching connector type is JL05-6A24-28S
(provided by users)



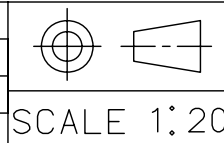
Item	Model	MOTOMAN-MH50
Configuration		Articulated Robot
Degree of Freedom		6
Payload		50 kg
Repeatability		±0.07mm
Range of Motion	S-Axis	±180°
	L-Axis	+135° -90°
	U-Axis	+251° -170°
	R-Axis	±360°
	B-Axis	±125°
Max Speed	T-Axis	±360°
	S-Axis	3.14rad/s,180°/s
	L-Axis	3.11rad/s,178°/s
	U-Axis	3.11rad/s,178°/s
	R-Axis	4.36rad/s,250°/s
Allowable Moment	B-Axis	4.36rad/s,250°/s
	T-Axis	6.28rad/s,360°/s
	R-Axis	216N·m (22kgf·m)
Allowable Inertia (GD ² /4)	B-Axis	216N·m (22kgf·m)
	T-Axis	147N·m (15kgf·m)
	R-Axis	28kg·m ²
Approx.Robot mass		550kg
Ambient Conditions	Temperature	0~+45°C
	Humidity	20~80%RH (Non-codensing)
	Vibration	Less than 4.9m/s ² (0.5G)
	Others	•Free from explosive or corrosive gas and liquid. •Free from dust,oil or water. •Free from electrical noise.
Power Requirements		4.0KVA



Air exhaust PT3/8 with pipe plug
Internal user wiring connector
type is JL05-2A24-28SC (with cap)
Matching connector type is JL05-6A24-28P
(Provided by users)



REVISIONS



YASKAWA
株式会社 安川電機

作図
DRAW.
検図
CHECK.
承認
APPR.

TITLE MOTOMAN-MH50
DIMENSION DIAGRAM

DWG.NO.
HW0389238

REV.
2