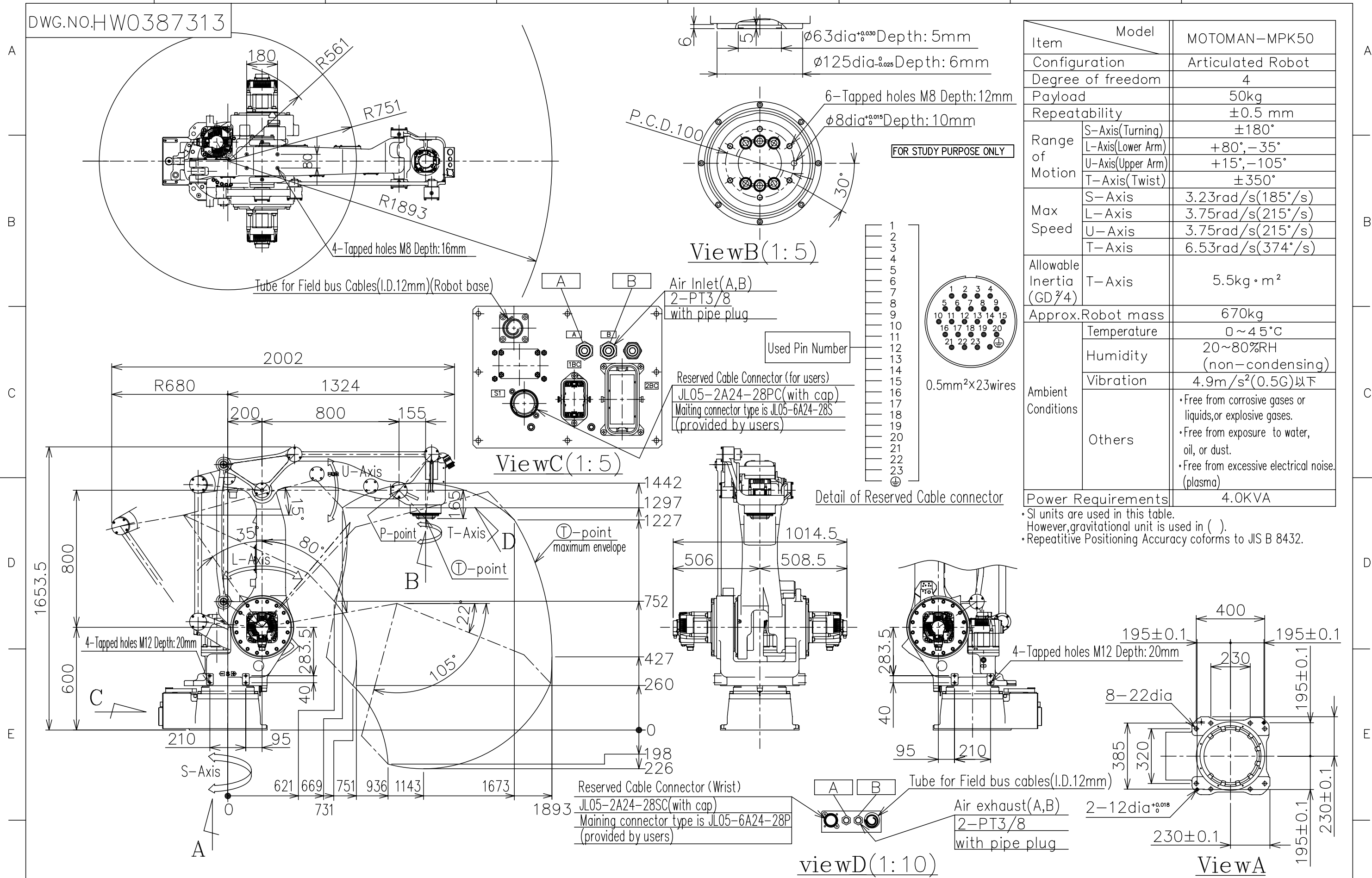


DWG.NO.HW0387313



Item	Model	MOTOMAN-MPK50
Configuration		Articulated Robot
Degree of freedom		4
Payload		50kg
Repeatability		±0.5 mm
Range of Motion	S-Axis(Turning)	±180°
	L-Axis(Lower Arm)	+80°, -35°
	U-Axis(Upper Arm)	+15°, -105°
	T-Axis(Twist)	±350°
Max Speed	S-Axis	3.23rad/s(185°/s)
	L-Axis	3.75rad/s(215°/s)
	U-Axis	3.75rad/s(215°/s)
	T-Axis	6.53rad/s(374°/s)
Allowable Inertia (GD ² /4)	T-Axis	5.5kg·m ²
Approx. Robot mass		670kg
Ambient Conditions	Temperature	0~45°C
	Humidity	20~80%RH (non-condensing)
	Vibration	4.9m/s ² (0.5G)以下
	Others	<ul style="list-style-type: none"> Free from corrosive gases or liquids, or explosive gases. Free from exposure to water, oil, or dust. Free from excessive electrical noise. (plasma)
Power Requirements		4.0KVA

• SI units are used in this table.
 However, gravitational unit is used in ().
 • Repetitive Positioning Accuracy conforms to JIS B 8432.

REV. 1	SCALE 1:20	YASKAWA 株式会社 安川電機	作図 DRAW.	TITLE MOTOMAN-MPK50 DIMENSION DIAGRAM	DWG.NO. HW0387313	REV.
			検査 CHECK.			